



BARNESLEY FOOTBALL CLUB
OAKWELL

VISITING SUPPORTER'S GUIDE

Not Just a Game



WELCOME

On behalf of everyone at Barnsley FC, we are looking forward to welcoming you to Oakwell for the upcoming fixture.

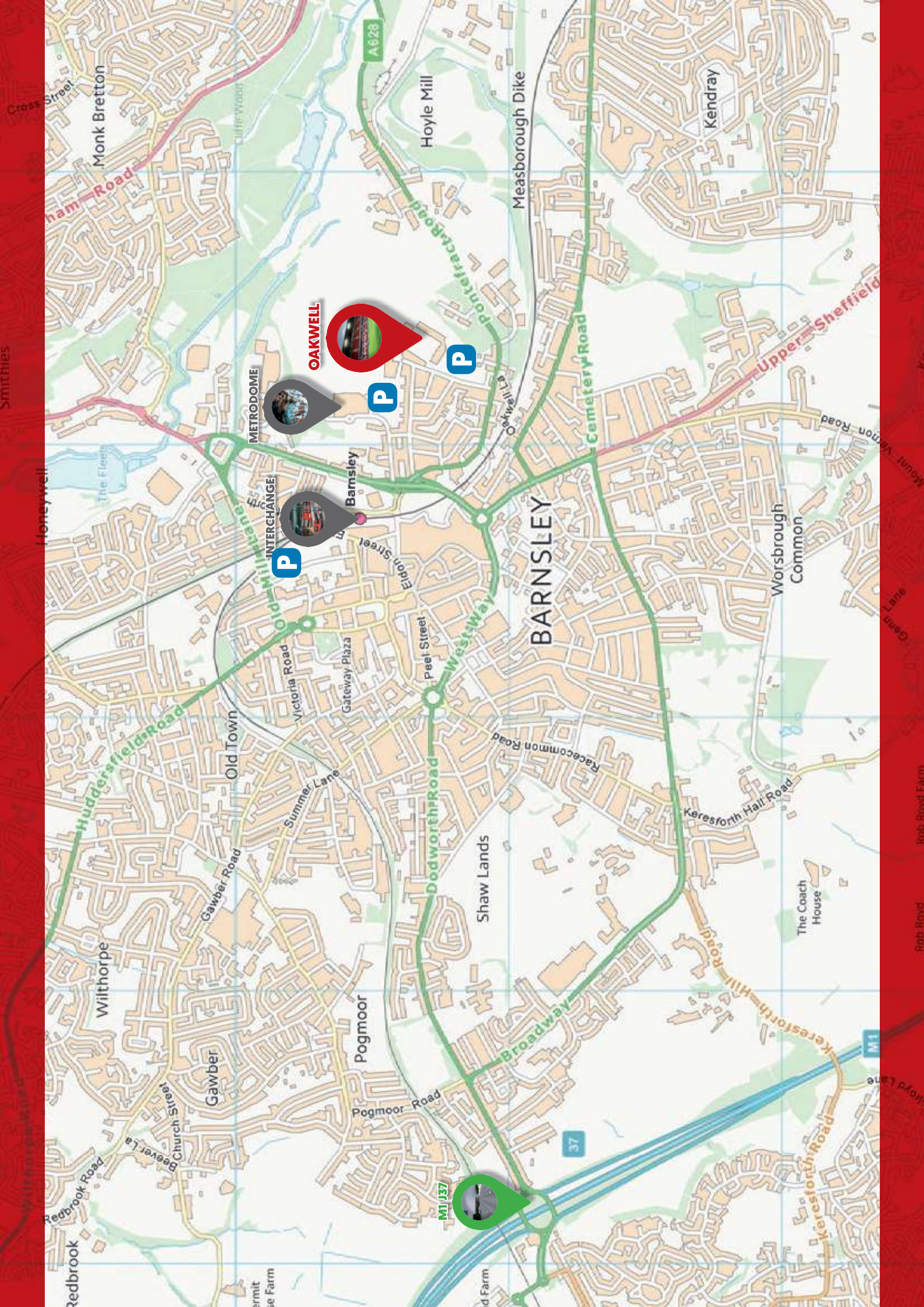
This guide is designed to help you get the best experience possible on your visit to the home of The Reds, by providing you with useful information that should assist you in finding your way to Oakwell and enjoying your time in and around the town of Barnsley itself.

We hope you find these pages useful and we wish you a safe and memorable trip to Oakwell.

CONTENTS

- 4 MAP OF BARNESLEY
- 5 TRAVEL INFORMATION
- 6 GETTING TO OAKWELL STADIUM
- 7 THINGS TO DO IN THE AREA
- 8 AWAY SUPPORTERS PARKING
- 9 DISABLED AWAY FAN INFORMATION
- 10 AT OAKWELL STADIUM
- 11 COUNTDOWN TO KICK OFF
- 12 MATCHDAY CATERING
- 13 FURTHER INFORMATION





OAKWELL



P

METRODOME INTERCHANGE



P

Barnsley



P

M1 J37



BARNSELY

TRAVEL INFORMATION

With thousands of people trying to get to Oakwell Stadium on a matchday, as a club we are aware of the potential impact this has on both the environment and local traffic.

Therefore when making your journey to Oakwell we would ask you, wherever possible, to consider travel options which could help reduce these issues.

RAIL SERVICES TO BARNESLEY - NORTHERN RAIL

Barnsley Interchange is roughly a ten minute walk away from Oakwell Stadium. The station is served by trains running between Sheffield and Leeds.

From the interchange turn left away from the town centre and head towards and then under the bridge that the dual-carriageway runs over. Once under the bridge, cross the road carefully, then turn left up the slip road and then take the first road on the right and head towards the Metrodome leisure complex at the top of the hill. Oakwell is now clearly visible.

TAXI SERVICES IN BARNESLEY - CITY TAXIS

City Taxis are a club partner and one of South Yorkshire's leading private hire taxi services, with over a thousand drivers and using state of the art technology, City Taxis are able to provide the best possible service to their customers. Give them a call on matchday to get you to and from Oakwell.

<http://smarturl.it/cityb>

01226 288888



GETTING TO OAKWELL STADIUM

BY CAR:

Exit the M1 at Junction 37 and take the A628. Stay on that road and you'll soon see signage pointing you to Oakwell.

BY AIR:

Robin Hood Doncaster/Sheffield Airport is less than thirty miles away from Barnsley, whilst Leeds/Bradford Airport isn't much further than that. If you want a much more mainstream airport then Manchester is less than fifty miles away and has excellent transport options for your onward journey.

BY TRAIN:

Barnsley Interchange is served by trains going between Sheffield and Leeds primarily. It will take you about two and a half hours to get to Barnsley from London St. Pancras, for example, with a change in Sheffield. It will be slightly quicker from a Northern city like Liverpool, again changing at Sheffield. If travelling from anywhere in the North East, you'll usually change at Leeds. You can also go direct to Wakefield which is a 15 minute journey and there you can get services direct to London and other cities throughout the UK.



THINGS TO DO IN THE AREA

If you're staying in the local area or visiting for a game and looking to make the most of your stay, you might like to take advantage of some of the services on offer around Barnsley or visit some of the areas stand-out landmarks.

BARNSELY METRODOME

www.bpl.org.uk/metrodome-leisure-complex

01226 730060

An award winning multifunctional venue offering a wide range of leisure activities. Home to Calypso Cove Waterpark, Metrodome Bowling and Fitness Flex Metrodome, the venue has something for everyone.

The Metrodome is a designated 'away' supporters venue, serving food and drink right up to kick off, and is a mere five minute walk away from Oakwell.

ALHAMBRA CENTRE BARNSELY

www.alhambracentre.co.uk

01226 295355

The Alhambra Shopping Centre is a dual level centre located in the heart of Barnsley Town Centre. Home to over 40 stores including Primark, Wilko, Next, TK Maxx and Barnsley FC, the Alhambra is a desirable and attractive shopping location for customers and retailers in the area.

WORSBROUGH MILL

www.worsbrough-mill.com

01226 774527

Worsbrough Mill is a 17th Century working water mill set in stunning parkland. It is an amazing place to visit, watch wildlife and see history come to life.

CANNON HALL

www.cannon-hall.com

01226 772002

Cannon Hall is a stunning Georgian country house museum set in 70 acres of historic parkland and beautiful landscaped gardens. It is the perfect day out for all the family.

MEADOWHALL

meadowhall.co.uk

0333 313 2000

Meadowhall is an indoor shopping centre in Sheffield, just 13 miles from Barnsley. It is the largest shopping centre in Yorkshire and the eighth largest in the United Kingdom and is home to over 280 stores and service outlets including all of the major fast food brands.

AWAY SUPPORTER'S PARKING

Between Oakwell Stadium and the Metrodome is a car park for visiting supporters, called the Queens Ground, which costs £5 for Cars and £20 for Coaches. This is just a couple of minutes walk from the stadium.

SATNAV: S71 1AN

An aerial photograph of the Queens Ground area, showing the stadium, surrounding buildings, and parking lots. Two yellow callout boxes highlight specific areas: a rectangular box on the left and a triangular box pointing to a parking area on the right.

AWAY SUPPORTERS CAR PARK

DISABLED AWAY FANS INFORMATION

At Barnsley Football Club we take our responsibilities towards disabled supporters very seriously. We recognise that disabled supporters will likely need assistance to get full enjoyment from their matchday experience at Oakwell, with capacity to offer a variety of reasonable adjustments.

Please note, all reasonable adjustments are subject to qualification and availability.

For further information please contact:

BoxOffice@barnsleyfc.co.uk

01226 211211

PERSONAL ASSISTANT / ESSENTIAL COMPANION

We provide free PA / Essential Companion tickets to supporters who need support from another person to be able to enjoy their matchday experience.

WHEELCHAIR SPACES

Wheelchair users are accommodated in the North Stand, halfway up the stand on a raised platform that has space for 18 individual chairs.

Disabled supporters not requiring wheelchair access should stipulate their own seating requirements at time of purchasing tickets to ensure appropriate seating is adequately provided. Locations are however subject to change based on Oakwell Stadium seating configuration for certain matches.

ACCESSIBLE ENTRANCES / WHEELCHAIR ACCESS

We have accessible entrances for wheelchair users and supporters who have mobility problems that offer ground level access.

MATCHDAY COMMENTARY

We offer headsets for partially sighted and blind supporters, these are to be collected from the Reds Superstore prior to kick off, subject to availability.

ASSISTANCE DOGS

Any supporter wishing to attend Oakwell Stadium with an assistance dog needs to contact the Box Office prior to the fixture to make arrangements, either by phone on 01226 211211 or email boxoffice@barnsleyfc.co.uk

ACCESSIBLE TOILETS

There are accessible toilets and facilities located in the North Stand for visiting supporters. These are clearly signed but should you require assistance, please seek out advice from the nearest steward.

CATERING FACILITIES

We have catering facilities located within the 'away' concourse area of the North Stand here at Oakwell. Our serving counters are low level, adequate for wheelchair users. As a club we are dedicated to making your trip to our home an enjoyable experience.

CAR PARKING

The club has parking areas for away supporters located in the Queens Ground. For disabled supporters who are Blue Badge holders we urge you to notify stewards upon arrival then you will be diverted to the most appropriate spaces. This costs £5 cash and is on a first come, first served basis and isn't available to pre-book.

AT OAKWELL STADIUM

The away supporters section of Oakwell is located in the North Stand of the stadium. This is clearly signposted and is sponsored by club partner, Palmer Construction.

Upon arrival at Oakwell, there are a number of outlets of information available to you. Our stewards are strategically placed around the stadium in their high-visibility uniforms, on hand to give assistance and answer any questions you may have. They have a high knowledge of local amenities and stadium access - if they do not know a piece of information they will endeavour to find someone that does.

AWAY TICKET COLLECTION

Away fans are advised to collect any tickets prior to the fixture from Main Reception at Oakwell which is located in the South Stand. Tickets are usually available to collect from 2pm onwards.

REDS SUPERSTORE

Our superstore is situated in the South Stand and is open for business Monday to Saturday, including matchdays, giving you the perfect opportunity to shop whenever you are at the stadium.

Monday to Friday: 09:00 - 17:00

Saturday: 09:00 - 15:00 (12:00 on non-matchdays)

Sunday: CLOSED

Evening fixtures: 09:00 - Kick Off



COUNTDOWN TO KICK OFF

Please note that the following timeline is relative to a 3pm kick off.

- 09:00 Box Office and Reds Superstore opens
- 10:00 Main Reception opens
- 13:30 Pre-match entertainment begins
- 13:30 Turnstiles open for entry into the stadium
- 14:00 Away ticket collection opens
- 14:15 Teams emerge for pre-match warm-up
- 14:55 Teams enter the tunnel
- 15:00 Kick Off



MATCHDAY CATERING

BEER

Coors £4.00 per pint / £2.00 per half

Carling £3.80 per pint / £1.90 per half

Bitter £3.70 per pint / £1.80 per half

Carling Dark fruits £4.00 per pint /
£2.00 per half

Coors & Carling bottles £3.70

Worthington cans £3.50

Kingston Press Cider £3.90

SOFT DRINKS

Pepsi Max/Pepsi/Tango/7UP £2.00

Water £1.80

Hot Drinks

Coffee/Tea/Bovril/Hot Chocolate/
Soup £2.00

CONFECTIONARY

Kitkat/Yorkie £1.00

Grab bags £2.50

Crisps £1.50

HOT FOOD

Pies £3.20

Chips £2.60

Burgers/Hot Dogs £3.80

Sausage Rolls £2.60

**All our catering is supplied by ABM.*



FURTHER INFORMATION

RE-ADMITTANCE

There is no re-admittance to the stadium if you choose to leave prior to the end of the fixture.

FLAGS & BANNER POLICY

Barnsley FC encourage an exciting atmosphere at matches and encourages supporters to bring flags and banners, but these must adhere to the guidelines set by the club in tandem with the stadium's safety team as stipulated below:

- The club reserves the right to refuse the allowance of flags or banners to be displayed particularly if the content is considered to be offensive, discriminatory, defamatory or inflammatory.
- Any item that the club or any of its employees deem possible to be used as a potential weapon and/or compromise public safety.
- Any item above the area of 60cm X 100cm must be flame retardant and have a fire safety certificate to prove so, provided in advance of the fixture.
- The flag pole should be no bigger than 7mm in diameter and 1 metre in length. The flag pole material should ideally be plastic and rounded/covered at the end.

- Flags and banners should be presented to stewards prior to entry to the stadium where they will be inspected in accordance with this list and approved prior to admittance.

- The club reserves the right to confiscate any flags and banners brought into Oakwell Stadium which weren't approved by stewards prior to entry.

KICK IT OUT APP

You can report an incident of discrimination via the Kick It Out app which can be used on iPhone and Android devices. Download the product from the Apple Store or Google Play.

CLUB CONTACTS

For all enquiries, please contact reception@barnsleyfc.co.uk or call 01226 211211



barnsleyfc.co.uk



@barnsleyfc



@barnsleyfc



@barnsleyfc